

The Peasants' Last Revolt

A WALK THROUGH
KENT'S HISTORY



Explore
KENT

faversham.org/walking


FAVERSHAM
MARKET TOWN OF KINGS

BOUGHTON - HERNHILL - DARGATE - DUNKIRK



A walk through Kent's history

*"A table, a chair, a bowl
of fruit and a violin; what
else does a man need?"*

Albert Einstein

North Kent...

THE FRUIT BOWL OF ENGLAND



This area is part of the North Kent Fruit Belt, where both the soil and the climate are ideal for growing top-fruit.

Although the Romans and the Normans planted here, fruit growing had fallen into decline by the 16th century – but was revived by one Richard Harris, who planted 105 acres with cherries and apples in Teynham, just a few miles away. Others followed suit and you still see throughout the area extensive orchards today. It is also ideal for growing hops, as evidenced by the number of oasthouses still standing. Both crops required armies of fruit pickers – many were Romany Gypsies, while tens of thousands from London's East End also came "hopping down in Kent".



Walk through some of Kent's most bountiful and beautiful countryside and pass by the scene of the last armed uprising on English soil when you follow the trail of the Peasants' Last Revolt.

From gently rolling fertile countryside, alive with wild flowers and industrious bees, to the woodland depths of the county's largest forest, the hurly burly of modern day life will seem far behind you as you follow historic paths through the heart of Kent's hop growing traditions.

Best of all, there'll be a chance to try and buy some of the region's abundant harvest at restaurants, rural pubs, a farm shop and a tearoom along the way.

A few miles from Faversham and England's oldest brewer Shepherd Neame, beer has been produced for generations using hops from this area, once picked by 'hoppers' from London. Oast houses, ancient villages and abundant orchards will delight you, while the area's past will haunt you as you walk near to the site of England's last armed uprising.

Close by the hop gardens in Bull Lane and those surrounding Boughton Church, your walk will take you through fields of grazing livestock and a chequer board of orchard slopes. You will pass the ancient settlement of Boughton and picturesque Hernhill, with its memorial to the local labourers who lost their lives at the Battle of Bossenden Wood - the Peasants' Last Revolt. At Hernhill you catch your first glimpse of magnificent Mount Ephraim and its gardens, standing as a beacon above the surrounding orchards and providing a peaceful place to enjoy your first taste of the harvest from this rich part of the North Kent Fruit Belt. The estate's cherries, strawberries, plums, apples, pears and cobnuts feature on the seasonal menus at its restaurant and tearoom and in its farm shop. Drinks for weary walkers include Kentish wine and local ales.

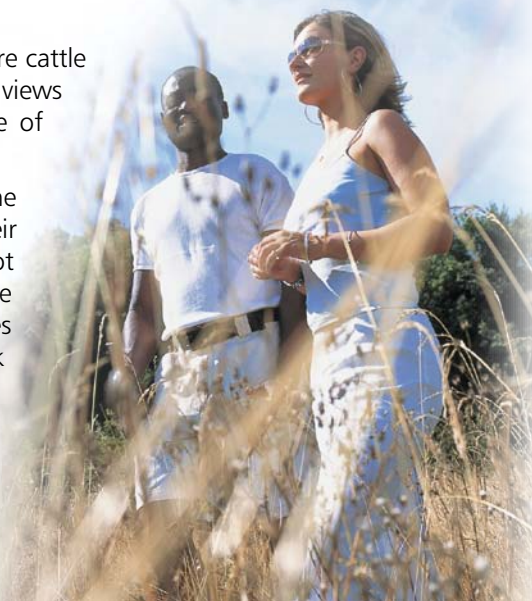
At Hernhill you can dine at the Red Lion. This beautiful 14th century Wealden Hall house provides a unique place to enjoy a refreshing drink, enjoy a meal and reflect on the area's past.

Then, on to delightful Dargate, with its well-regarded gastro pub, the Dove, and local cheese-maker at nearby Lamberhurst Farm. Next you'll come to The Blean, or Blean Woods – a former royal forest in existence since before 1600. Human activity here is limited to the traditional craft of coppicing sweet chestnut trees, which floods the woodland floor with light in spring and summer, producing glades of wild flowers, especially bluebells. Almost half of the wood is a Site of Special Scientific Interest (SSSI). Woodpeckers, nightjars and the nightingale, in particular, thrive here – one of the few places in Britain where you will also find the heath fritillary butterfly.

Then you cross farmland on the crest of the hill, where cattle quietly graze on either side of you, with unforgettable views across open countryside to The Swale and the Isle of Sheppey beyond.

Then walk back into Boughton, nestled beneath the shadow of the woods, where pilgrims rested on their journey to Becket's shrine. The White Horse Inn not only stands on the route Chaucer's pilgrims would have taken, it is actually mentioned in The Canterbury Tales and is the perfect place to rest and dine after your walk as those medieval travellers would have done.

Wherever you choose to stop in this charming corner of the Garden of England, your time will, indeed, be fruitful.



Step by step WALKING GUIDE

Planning Your Walk

Feel free to start your walk at any point: as this is a circular walk you'll always return to where you began.

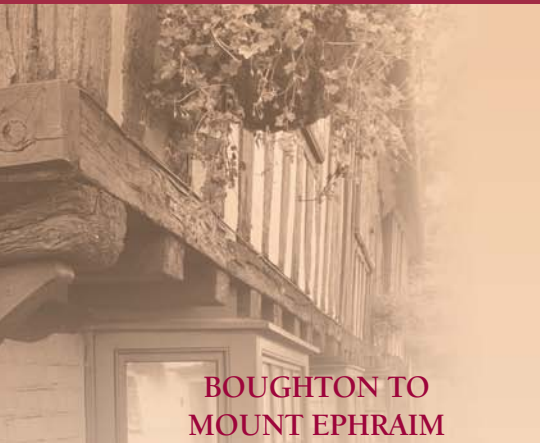
Many sections of the walk end at a spot where you'll find a pub, restaurant or tearoom to help fortify you or provide a welcome treat once you've finished the whole route.

There are several places to leave your vehicle if you are arriving by car, including The White Horse Inn in Boughton and Mount Ephraim and you can park in The Street, Boughton, as appropriate.

If not driving, you can take a train to Faversham and catch a bus to Boughton.

There are public toilets in Boughton and you can also use those at the various 'pub stops' en route.

Use our directory to find a list of local accommodation, food producers, retailers and restaurants. Also, check out the wealth of additional information at Faversham.org/walking.



BOUGHTON TO MOUNT EPHRAIM

A1. Starting from the car park at the White Horse Inn in Boughton, turn left into The Street, walking uphill with fine old buildings on either side of you – the parish of Boughton has more listed buildings than any other in the Faversham area. You're walking on the old Roman road of Watling Street, which runs from Dover to London and was used by the pilgrims made famous by Geoffrey Chaucer.

A2. Continue along The Street, passing St. Barnabas' Church on your left and turn left into Bounds Lane. Walk up the slope until you reach the end of the wall on your left and turn left off the lane; almost immediately, take the right-hand fork in the grass track. You have your first views across the valley to Mount Ephraim standing high above the orchards below.

Follow this track until you reach the road. On your right are farm buildings, a former oast house and more orchards - loaded in summer with apples, cherries and pears.

A3. When you reach the T-junction with Staplestreet Road at the end of the track, turn left and then immediately right and pass through the gates opposite



The Blean...

A WILDLIFE HAVEN

The Blean – often referred to as Blean Wood – is an ancient woodland, in places untouched by humans, and is the largest wood in Kent. Originally a Royal Forest and therefore (like the New Forest in Hampshire) intended as a place where the king could hunt, parts of it were granted over the years to private landowners, including the Abbey at Faversham, for agriculture. The soil, however, is unsuitable for field crops, and few inroads were made into the virgin forest. Today, parts of The Blean are nature reserves, providing habitats for several rare butterflies, as well as nightjars and nightingales. In spring and summer, the coppiced areas of the forest are home to spectacular displays of woodland flowers.

into Mount Ephraim – home to the Dawes family since the 17th century. Follow the surfaced track towards the car parks. On your right is a fine view of the gardens, which cover 10 acres. A fountain stands in front of the cottages to your left.

If you can, take time to explore the beautiful grounds at Mount Ephraim, or relax for a while at its Woodrose Restaurant and Edwardian Tea Garden. For a small charge walkers are free to use the tearoom without a garden visit. It offers a wide selection of light meals, with locally sourced ingredients and hot and cold drinks, including Kentish wine and local ales. Mount Ephraim's home-

grown cherries, strawberries, plums, apples, pears and cobnuts will be on the menu in season and can also be bought in the farm shop. The Three Horseshoes at Staplestreet – just a short detour from your route, downhill from the gates to Mount Ephraim – provides another opportunity to relax and enjoy the region's local food and drink.

MOUNT EPHRAIM TO HERNHILL

B1. Continue along the track that passes Mount Ephraim's car parks, walking downhill past orchards on your right. When you reach the road turn right, following the road uphill towards the picturesque village of Hernhill.

B2. Hernhill is clustered around a green, with its handsome, spreading oak. On your right as you approach the green is St Michael's Church, with its magnificent carved wooden screen and churchyard memorial to the Courtenay Riots – the last armed uprising in England. The Battle of Bossenden Wood, just east of Boughton Hill, was led by Sir William Courtenay – a wine merchant from Truro with a history of mental illness. United against Workhouse legislation, his small army of local labourers were soundly defeated by soldiers from Canterbury in May, 1838. Across the green is the beautiful 14th century Red Lion. The ancient Wealden Hall house, with its medieval rafters, provides another opportunity to enjoy a drink and a restoring meal.



Lamberhurst Farm dairy



Jane Bowyer (second left) and the team at her dairy in Dargate have been making cheese from local cows' milk at Lamberhurst Farm for nearly four years.

The nutty, creamy Ashmore cheeses are made using unpasteurised milk and vegetarian rennet. Hand-crafted in the traditional way, the cheeses are pressed in muslin using hand-turned cast iron clamps and then left to mature for a minimum of five to six months.

Year-old Ancient Ashmore, Farmhouse Ashmore, a smoked variety, Canterbury Cobble and Kelly's goats' cheese are available from the farm from 10am-4pm Monday to Thursday, or at www.cheesemakersofcanterbury.co.uk.

THE PILGRIMS' WAY



Your walk will take you in the footsteps of the countless pilgrims who passed this way towards the famous medieval shrine of St. Thomas Becket in Canterbury Cathedral – immortalised by the poet Geoffrey Chaucer in his Canterbury Tales. The road they followed was ancient even in their day, of course – it was the main road the Romans built between Dover and London, known as Watling Street. Take a small detour up the hill from Boughton, past Dunkirk, and you'll catch a glimpse of the cathedral.

“One cannot think well, love well, sleep well, if one has not dined well”
Virginia Woolf



If you are ready for a break, The Dove is a quaint Victorian country pub renowned for its excellent food and warm welcome. A short detour from here, high-quality cheese is produced at Lamberhurst Farm.

DARGATE TO BOUGHTON

D1. On entering Dargate, turn right at The Dove Inn and then bear left into the bridleway that runs to the right-hand side of the white weather-boarded house on your left.

D2. Make your way up the hill and while you're getting your breath look back and enjoy the magnificent view across open countryside to the sea.

D3. You now enter The Blean, or Blean Wood - once a Royal Forest and still the largest wood in Kent. Continue to follow this track uphill without deviating left or right, passing through Holly Hill Farm. There is an optional detour you can take to the right to Holly Hill Tower by following the bridleway at D4. To find this 19th century tower, built for the then owners of Mount Ephraim to monitor their ships in the Thames estuary to the north, take the track to the left into the woods, just beyond the end of the field on the right. About 25 yards along the track, where it bends left, walk through the trees on the right to the rough pathway to the tower.

D4. Continue along the main track you have been following to Dawes Road; as you approach the road there is a magnificent view to your right across the fertile countryside towards The Swale and the Isle of Sheppey beyond. Cross over Dawes Road and continue on the bridleway through Clay Pits and High Woods, again not deviating to the left or right. Go through the gate at the end by a woodland cottage and within 50 yards you will find yourself on Boughton Hill.

D5. Turn right down Boughton Hill, stopping, perhaps, at Martin's restaurant or The Queen's Head, an alehouse since 1682 offering good local food and also a warm welcome for dogs, and make your way back into The Street at Boughton, returning to the White Horse Inn car park.

The White Horse Inn not only stands on the route Chaucer's pilgrims would have taken, it is actually mentioned in The Canterbury Tales and provides the perfect place to rest and dine as those medieval travellers would have done.

Wherever you choose to stop in this charming corner of England, your time will, indeed, be fruitful!

HERNHILL TO DARGATE



C1. Pass the village green at Hernhill, keeping the Red Lion on your right and continue until you reach the end of the row of houses on your right. Then take the footpath between the end of the houses and the playing field.

C2. This footpath takes you through more orchards. Cross over a road and continue again along the footpath; you'll shortly be passing orchards once again on your right.

C3. When you reach the next road turn left and walk along the road for 200 yards, then turn left again down a path you'll see next to a house. Walk along this path, then follow it as it turns to the right and becomes a tarmac road. Continue until you reach Plumpudding Lane and a cluster of buildings.

C4. Turn right here and follow the road into the hamlet of Dargate; you may just see the 'big' house, Dargate House, a Regency villa, in the distance. On your left as you enter Dargate is The Dove Inn. Look out for the old pub sign carved above the door.

White Horse Inn

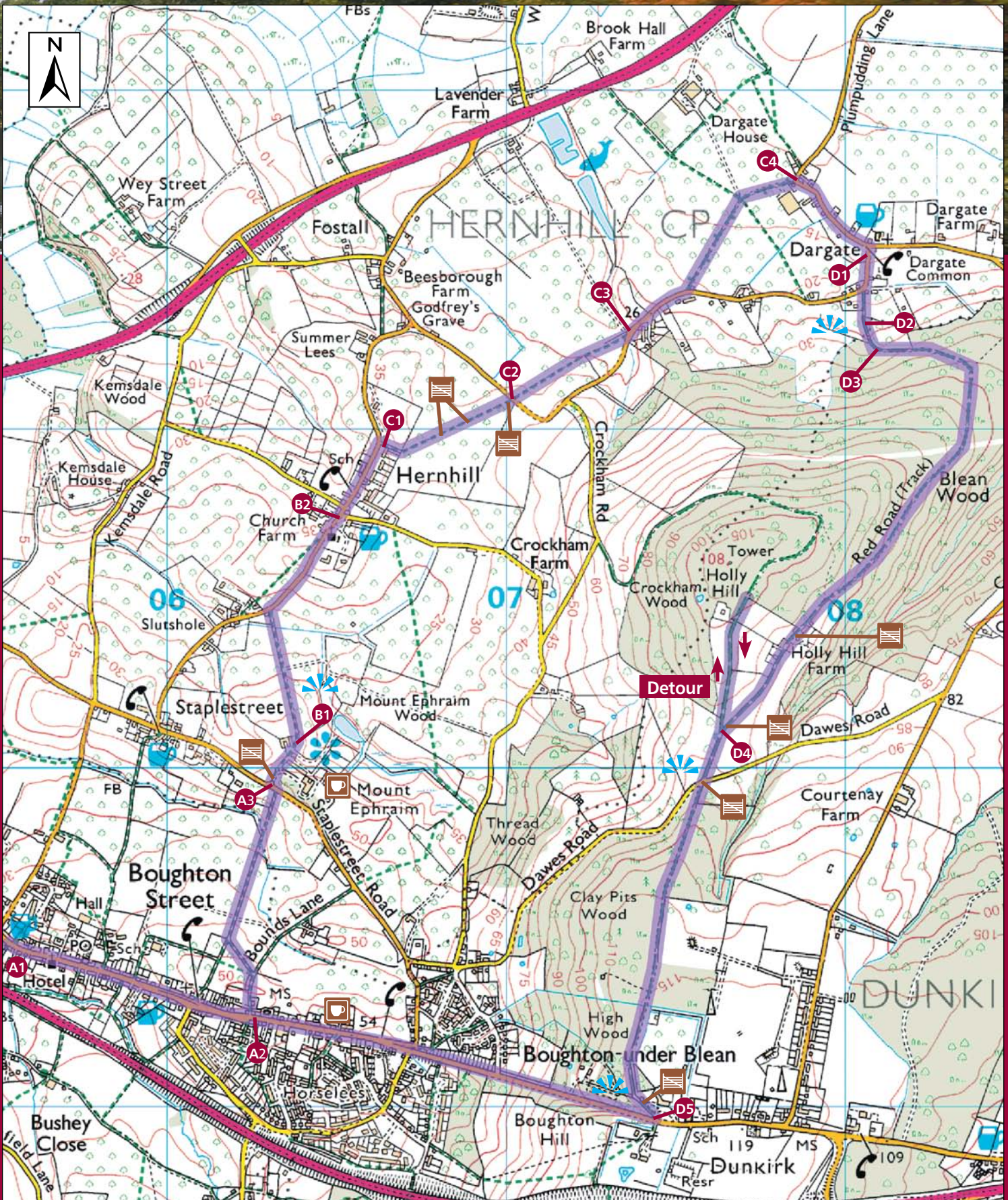


At the White Horse Inn and guesthouse in Boughton you can enjoy a slice of history and a generous helping of the area's rich harvest.

Surrounded by orchards and hop gardens, this ancient coaching inn is mentioned in The Canterbury Tales and it was here that the Courtenay rioters stood trial when it was a courtroom.

Today visitors are guaranteed a far warmer welcome, with a classic menu including steak and ale pie, seasonal fruit crumble, home-made specials and a Sunday carvery. Home-cooked meals use local ingredients and the beer is brewed in nearby Faversham. Food is served daily until 9pm and to 4pm on Sunday.





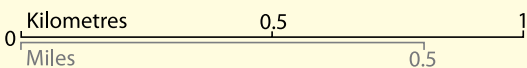
© Crown copyright reserved. Kent County Council licence number 100019238. October 2007

Walk Overview

- Distance:** 5.25 miles (8.5 km); 2.25 hrs (no stops)
- Fitness level:** Suitable for all fitness levels (There are steep slopes to ascend to the top of Boughton Hill, when approached from either direction)
- Toilets:** Next to post office in Boughton
- Refreshments:** Restaurants and pubs en route

- Transport:** Mainline railway station at Faversham, where a regular bus service operates to Boughton en route to Canterbury www.traveline.org.uk
- Pay phones:** Boughton, Hernhill & Dargate
- Parking:** The White Horse Inn, Boughton; Mount Ephraim; The Street, Boughton
- Map:** OS Explorer 149

- Garden/Arboretum
- Public house
- Viewpoint
- Place of worship
- Telephone
- Gate
- Refreshments



Directory of local businesses

FOOD, DRINK AND PRODUCE

A J Barkaway Butcher, Faversham ME13 7JE
01795 532040. Find us on faversham.org

Lamberhurst Farm Dairy,
Dargate ME13 9ES 01227 751741
www.cheesemakersofcanterbury.co.uk

Grow, Brogdale Farm ME13 8XZ
01795 531888. www.brogdaleonline.co.uk

Macknade Fine Foods, Faversham ME13 7JE
01795 534497/53737. Find us on faversham.org

Moor Organics, Deerton Street ME9 9LJ
01795 521341. Find us on faversham.org

Pine Trees Juice, Doddington ME9 0AX
01795 886266. www.pinetreesfarm.co.uk

Seasalter Lamb, Eastling ME13 0BD
07891 004474. www.seasalterlamb.co.uk

Snoad Farm, Otterden ME13 0DB
01795 890700. Find us on faversham.org

SW Doughty Butcher, Doddington ME9 0BH
01795 886255. Find us on faversham.org

PUBS AND RESTAURANTS

Albion Taverna, Faversham ME13 7DH
01795 591411. Find us on faversham.org

Anchor Inn and Crabshack,
Faversham ME13 7BP 01795 536471
Find us on faversham.org

Ardennes Restaurant, Faversham ME13 7JB
01795 590008. Find us on faversham.org

Black Lion, Lynsted ME9 0RJ
01795 521229.

Courtyard Restaurant,
Brogdale Farm ME13 8XZ
01795 530013. www.courtyard-restaurant.co.uk

Elephant, Faversham ME13 7JN
01795 590157. Find us on faversham.org

George Inn, Newnham ME9 0LL
01795 890237.

Osteria Posillipo, Faversham ME13 7LD
01795 590580. Find us on faversham.org

Phoenix Tavern, Faversham ME13 7BH
01795 591462. Find us on faversham.org

Plough, Stalisfield Green ME13 0HY
01795 890256. Find us on faversham.org

Plough Inn,
Lewson Street ME9 9JJ 01795 521348
Find us on faversham.org

Provenance, Faversham ME13 8PE
01795 539508. Find us on faversham.org

Read's, Faversham ME13 8XE
01795 535344. Find us on faversham.org

Rose and Crown, Perry Wood ME13 9RY
01227 752214. Find us on faversham.org

Shipwrights' Arms, Hollowshore ME13 7TU
01795 590088.

Spice Lounge, Faversham ME13 8NU
01795 533322. Find us on faversham.org

Sun Inn, Faversham ME13 7JE
01795 535098. Find us on faversham.org

Three Horseshoes, Hernhill ME13 9AX
01227 750842. Find us on faversham.org

White Horse Inn, Boughton ME13 9AX
01227 751343. Find us on faversham.org

White Lion, Selling ME13 9RQ
01227 752211. www.thewhitelion-selling.com

Woodrose Restaurant, Hernhill ME13 9TX
01227 751168. Find us on faversham.org

ATTRACTIONS

Beech Court Gardens, Challock TN25 4DJ
01223 740735. Find us on faversham.org

Belmont House, Throwley ME13 0HH
01795 890202. Find us on faversham.org

Brogdale Farm, Ospringe ME13 8XZ
01795 536250. Find us on faversham.org

Doddington Place, Doddington ME9 0BB
01795 886101. Find us on faversham.org

Farming World, Boughton ME13 9SP
01227 751144. Find us on faversham.org

Fleur Museum, Faversham ME13 8NY
01795 534542. Find us on faversham.org

Faversham Swimming Pools, ME13 8PW
01795 532426. Find us on faversham.org

Sailing Barge Greta, Standard Quay, Faversham
07711 657919. www.greta1892.co.uk

Mount Ephraim Gardens, Hernhill ME13 9TX
01227 751496. Find us on faversham.org

St Mary of Charity Church,
Faversham ME13 8JZ
01795 530599. Find us on faversham.org

Shepherd Neame Brewery Tours,
Faversham ME13 7AX
01795 542016. Find us on faversham.org

Shrine of St Jude, Faversham ME13 7SE
01795 539214. Find us on faversham.org

ACCOMMODATION

Barnsfield, Fostal ME13 9JG
01227 750973. Find us on faversham.org

Black Lion, Lynsted ME9 0RJ
01795 521229. Find us on faversham.org

Brenley Farm House, Boughton ME13 9LY
01227 751203. Find us on faversham.org

Church Oast, Hernhill ME13 9JW
01227 750974. Find us on faversham.org

Cot-Hoy, Buckland ME13 0TP
01795 535616. Find us on faversham.org

Court Lodge, Oare ME13 0QB
01795 591543. Find us on faversham.org

Fairlea, Faversham ME13 8NH
01795 539610. Find us on faversham.org

Frith Farm Cottages, Otterden ME13 0DD
01795 890701. Find us on faversham.org

Gladstone House, Faversham ME13 8DZ
01795 536432. Find us on faversham.org

Judd's Folly Hotel, Ospringe ME13 0RH
01795 591818. Find us on faversham.org

Leaveland Court, Leaveland ME13 0NP
01233 740596. Find us on faversham.org

March Cottage, Faversham ME13 8NH
01795 536514. Find us on faversham.org

Old Vicarage, Doddington ME9 0BD
01795 886136. Find us on faversham.org

Painter's Farm Caravan Camping Site,
Painter's Forstal ME13 0EG 01795 532995

Palace Farm, Doddington ME9 0AU
01795 886200. Find us on faversham.org

Railway Hotel, Faversham ME13 8PE
01795 533173. Find us on faversham.org

Read's, Faversham ME13 8XE
01795 535344. Find us on faversham.org

Sandhurst Farm, Newnham ME9 0NE
01795 886854. Find us on faversham.org

Sun Inn, Faversham ME13 7JE
01795 535098. Find us on faversham.org

Syndale Lodge, Faversham ME13 0RH
01795 531488. Find us on faversham.org

Tenterden House, Boughton ME13 0RH
01227 751593. Find us on faversham.org

Uplees Farm, Uplees ME13 0QR
01795 532133. Find us on faversham.org

White Horse Inn, Boughton. ME13 9AX
01227 751343. Find us on faversham.org

Food Trails in this series

- **Footsteps of Royalty & Romans** (Faversham – Ospringe – Painter's Forstal – Brogdale)
- **A Walk on the Wild Side** (Faversham – Davington – Oare – Luddenham)
- **Syndale Valley Walk** (Newnham – Eastling – Stalisfield – Doddington)
- **The Peasants' Last Revolt** (Boughton – Hernhill – Dargate – Dunkirk)
- **The Two Creeks Walk** (Faversham – Thorn Creek – Davington – Oare)
- **First Fruit** (Teynham – Conyer – Lewson Street – Lynsted)
- **Earth, Wind and Water** (Faversham – Goodnestone – Graveney – Seasalter)
- **A Land for All Seasons** (Sheldwich – Selling – Perry Wood – Badlesmere)

A Faversham Enterprise Partnership project, working in collaboration with Faversham Area Tourism Association

The Countryside Code

Respect – Protect – Enjoy

If you follow the Countryside Code wherever you go, you will enjoy walking in Kent and help protect the countryside now and for future generations.

Be safe, plan ahead and follow any signs. Leave gates and property as you find them. Protect plants and animals, and take your litter home. Keep dogs under close control. Consider other people.



For further information please visit www.countrysideaccess.gov.uk or Tel: 08451 003298

Remember to always follow the Highway Code.

For walking information: go to faversham.org/walking Telephone: 01795 534542

Visit: Tourist Information Centre, Fleur de Lis Heritage Centre, 10-13 Preston Street, Faversham, Kent ME13 8NS

